



**PLANET
IMPACT**

ENVIRONMENTAL SELLING



OUR TEAM



CO-FOUNDERS

ARON,
CHRISTIAN,
& STEPHAN
STEINKELLER



PLANET IMPACT INTL LIMITED IS
HEADQUARTERED IN SMART CITY MALTA - THE
NEW HUB FOR INTERNATIONAL IT COMPANIES.

PLANET IMPACT CORPORATE



ADRIAN SZUMSKI
CEO



OSCAR DALVIT
COO &
CO-FOUNDER



JULIUS GLÖCKNER
CFO



CAMYL BUENAVENTURA
MEDIA CONTENT
MANAGER





OUR
VISION

WE CONNECT HIGHER PURPOSE WITH
FINANCIAL REWARD TO CREATE THE
BIGGEST GLOBAL MOVEMENT:
SAVING OUR PLANET & OUR FUTURE

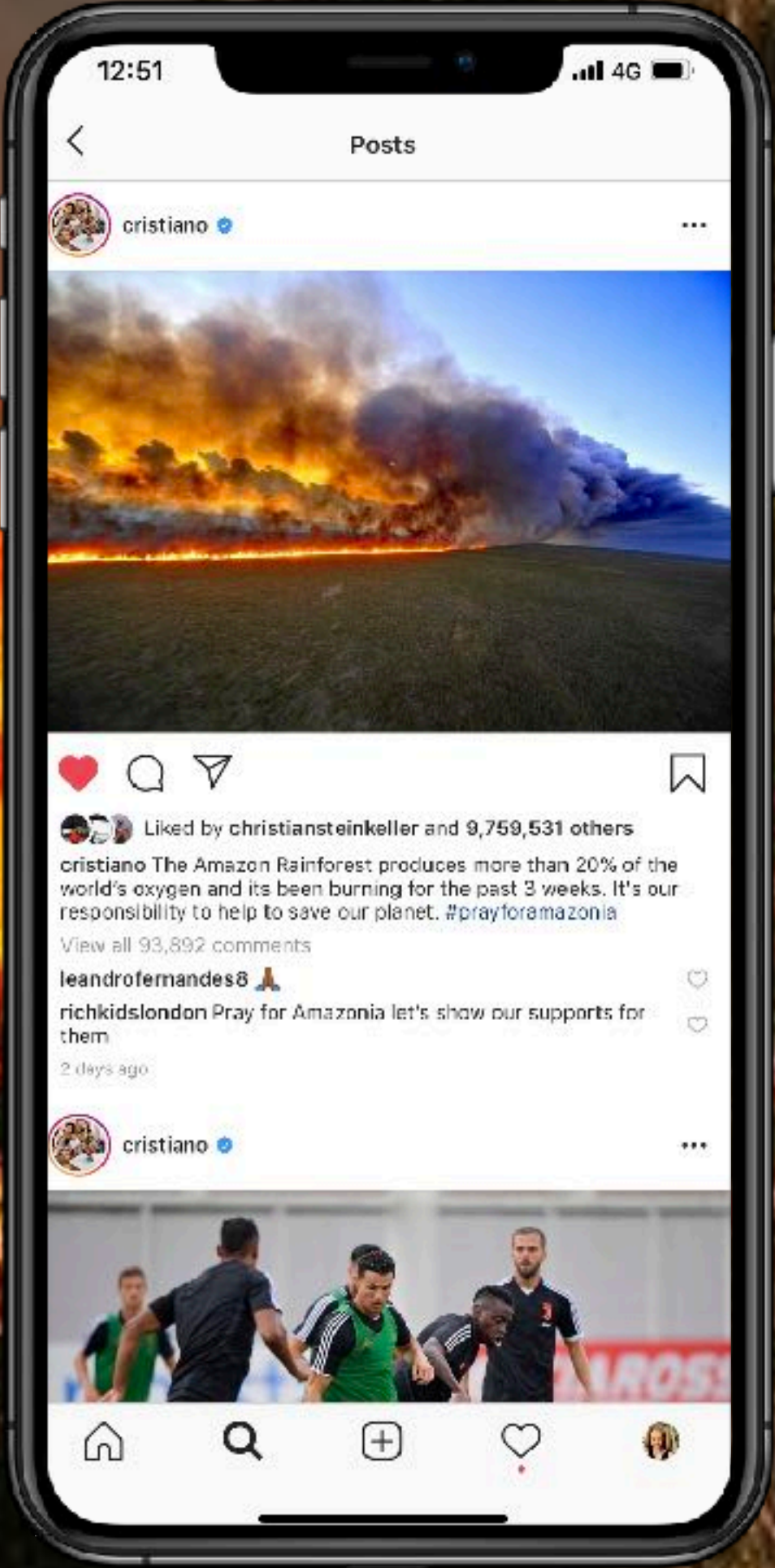
OUR
MISSION

WE WILL BE THE GREATEST
POSITIVE CONTRIBUTOR TO OUR
PLANET & PEOPLE





OUR PLANET IS DYING!

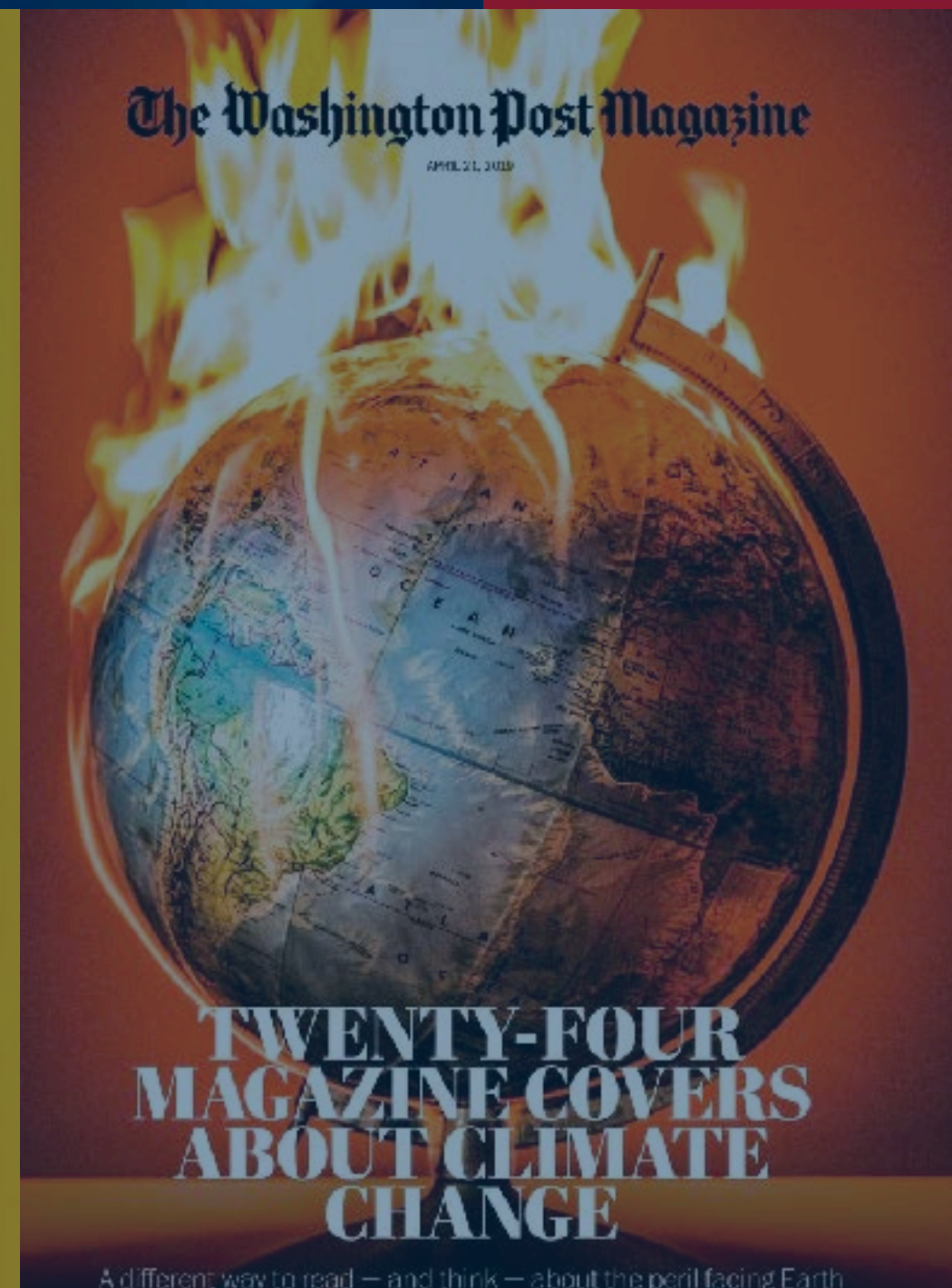
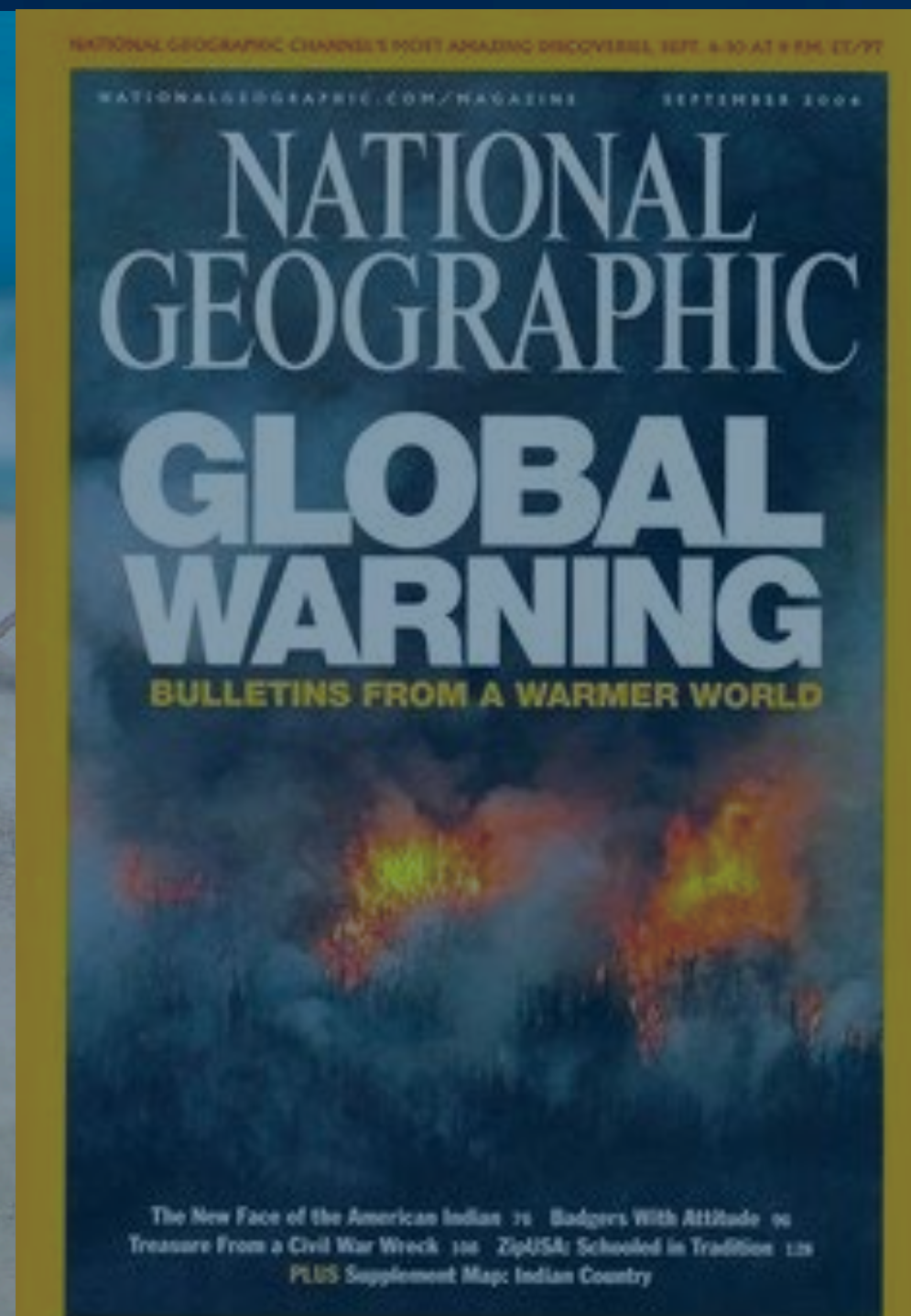




***LET'S ACT NOW
TOGETHER***



JOIN THE MEGATREND!





BIG PROBLEM

BIG OPPORTUNITY

THE SOLUTION:

ENVIRONMENTAL SELLING
“KNOWLEDGE PUT INTO ACTION”



YOUR PROFIT = EARTH PROFIT

OUR PRODUCTS

1 EDUCATIONAL ACADEMY



2 REFORESTATION



PROTECT ~1000 M² RAINFOREST

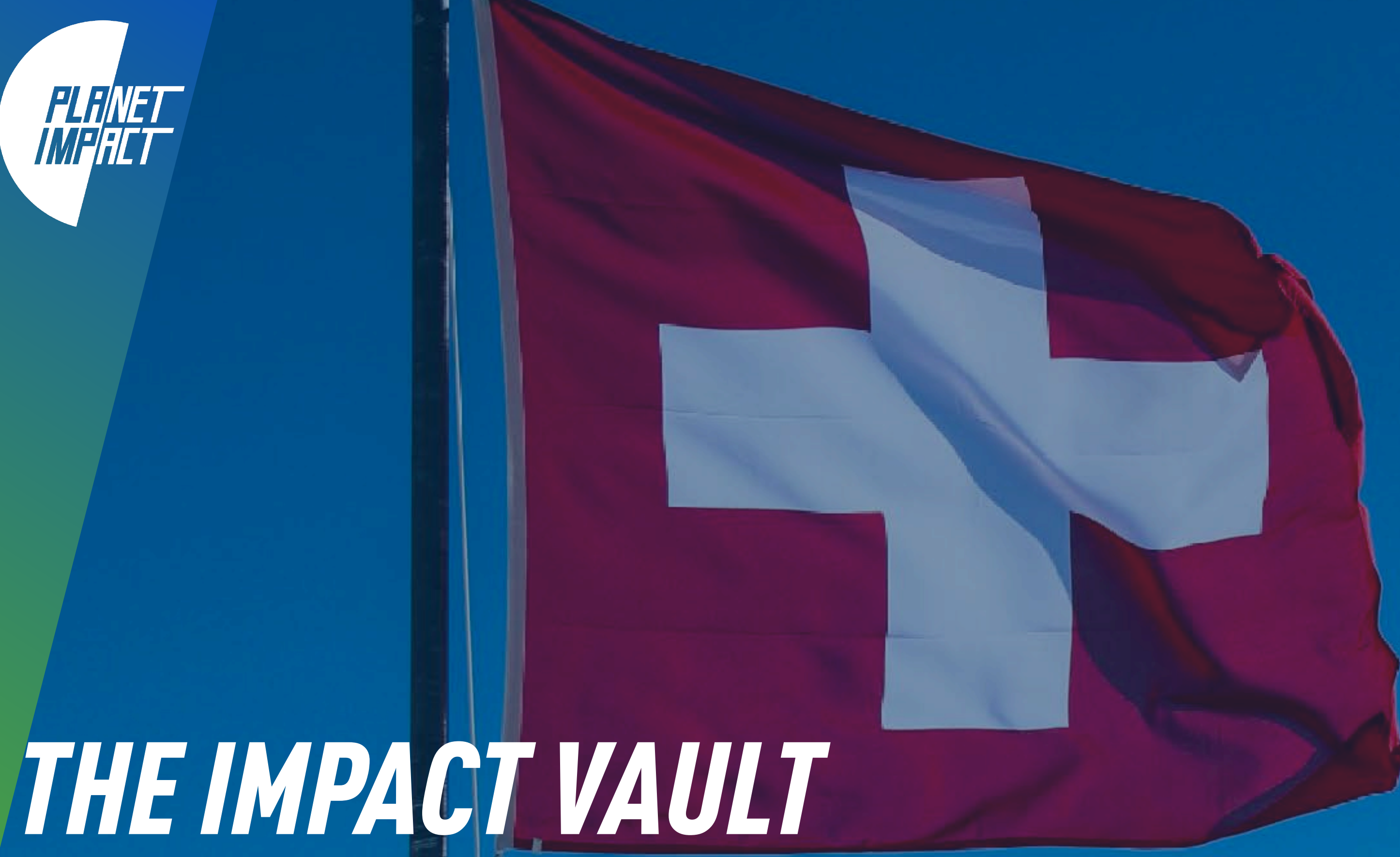
PLANT ~100 M² RAINFOREST



OUR MECHANISM

1 : 1 PLANET : PROFIT





EARTH ALLIANCE FOUNDATION

THE IMPACT VAULT

**OUR KEY
PARTNER**



CERTIFICATES
WWW.EARTHALLIANCEFOUNDATION.COM



ROBERT BOCK
FOUNDER &
BOARD MEMBER



ELIA PONTI
PRESIDENT
BOARD MEMBER



JOACHIM GUENSTER
BOARD MEMBER

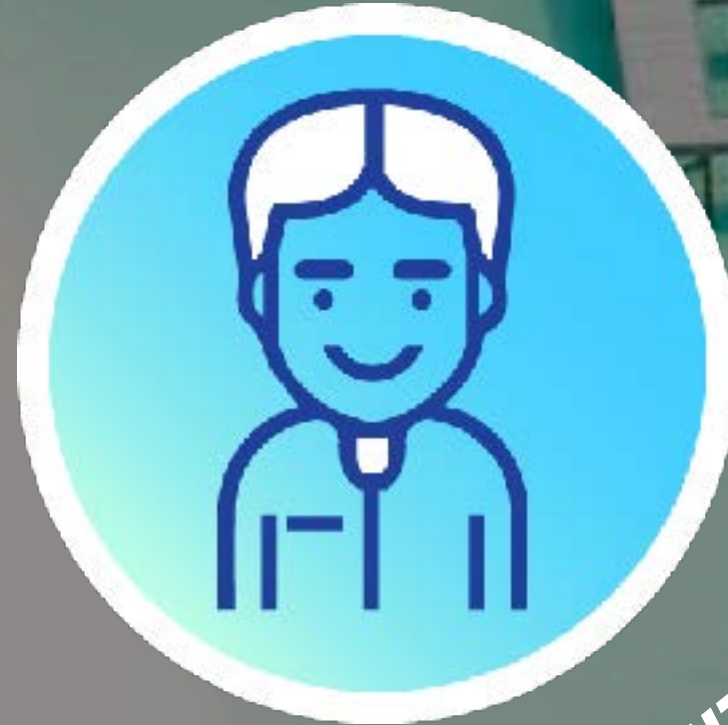
VALUE ADDED

BENEFITS

MONTHLY TRAVEL
DISCOUNT VOUCHER
OF 75EUR FOR ANY 1
PACK PURCHASED

75 EUR

SOR|TECHNOLOGY



60 EUR

MONTHLY
SUBSCRIPTION
OF 60EUR



PLANET
IMPACT

AFFILIATE

MODEL

**PLANET IMPACT IS PAYING THE FULL 40% MARKETING
BUDGET TO ALL ITS AFFILIATES**

COMPENSATION PLAN

1) UNILEVEL-BONUS

2) CAREER-BONUS



CUSTOMER BASED



VAT COMPLIANT



NO INVESTMENT

1) UNILEVEL-BONUS

LEVEL	COMMISSION
1	8%
2	8%
3	5%
4	5%
5	3%
6	3%
7	1%
8	1%
9	1%
10	1%
11	1%
12	1%
13	1%
14	1%



AFFILIATE



RANGER



PROTECTOR



GUARDIAN



CHAMPION



HERO



LEGEND

ALWAYS FULL 100% PAYOUT

NOT ALL LEVELS ARE ALWAYS FILLED UP
OR QUALIFIED. ALL OF THOSE 'UNDUE'
COMMISSIONS BUILT THE WORLDWIDE POOL
THAT WILL BE PAID OUT VIA BONUS 2)

2) CAREER-BONUS

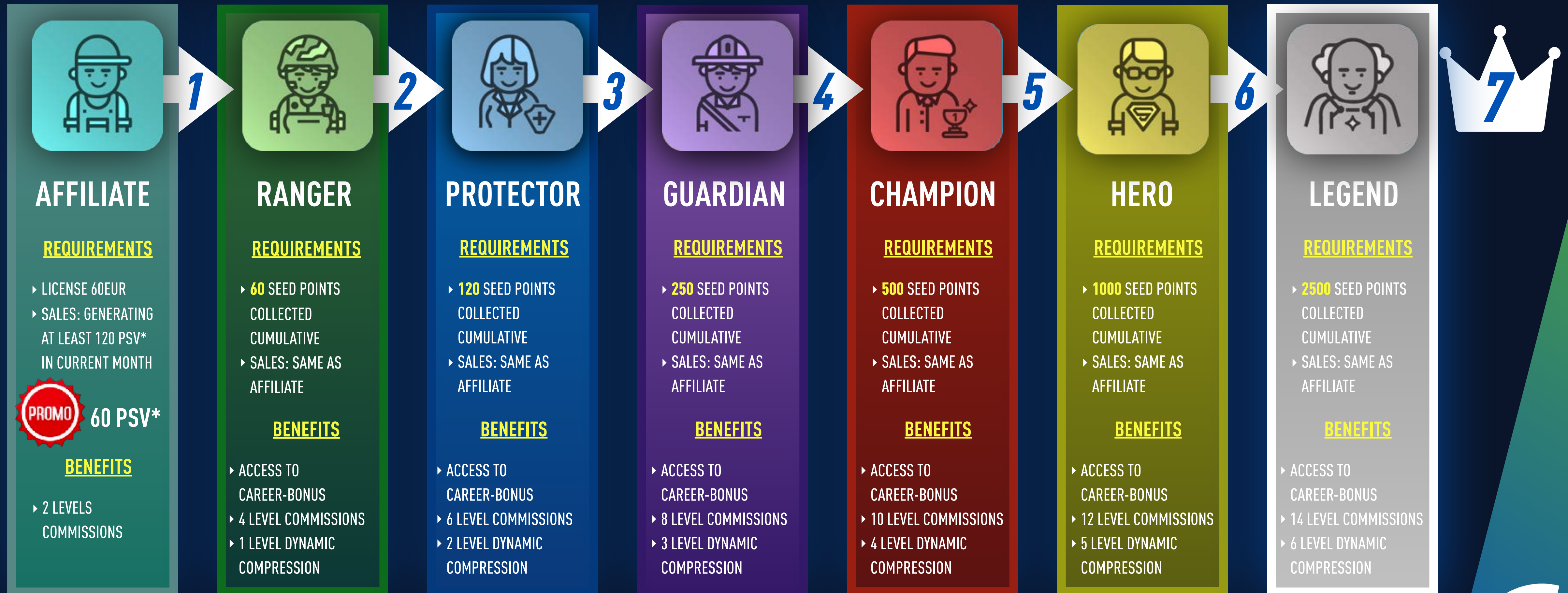
(2/3 FROM WORLDWIDE POOL)

FOR RANGERS AND ABOVE

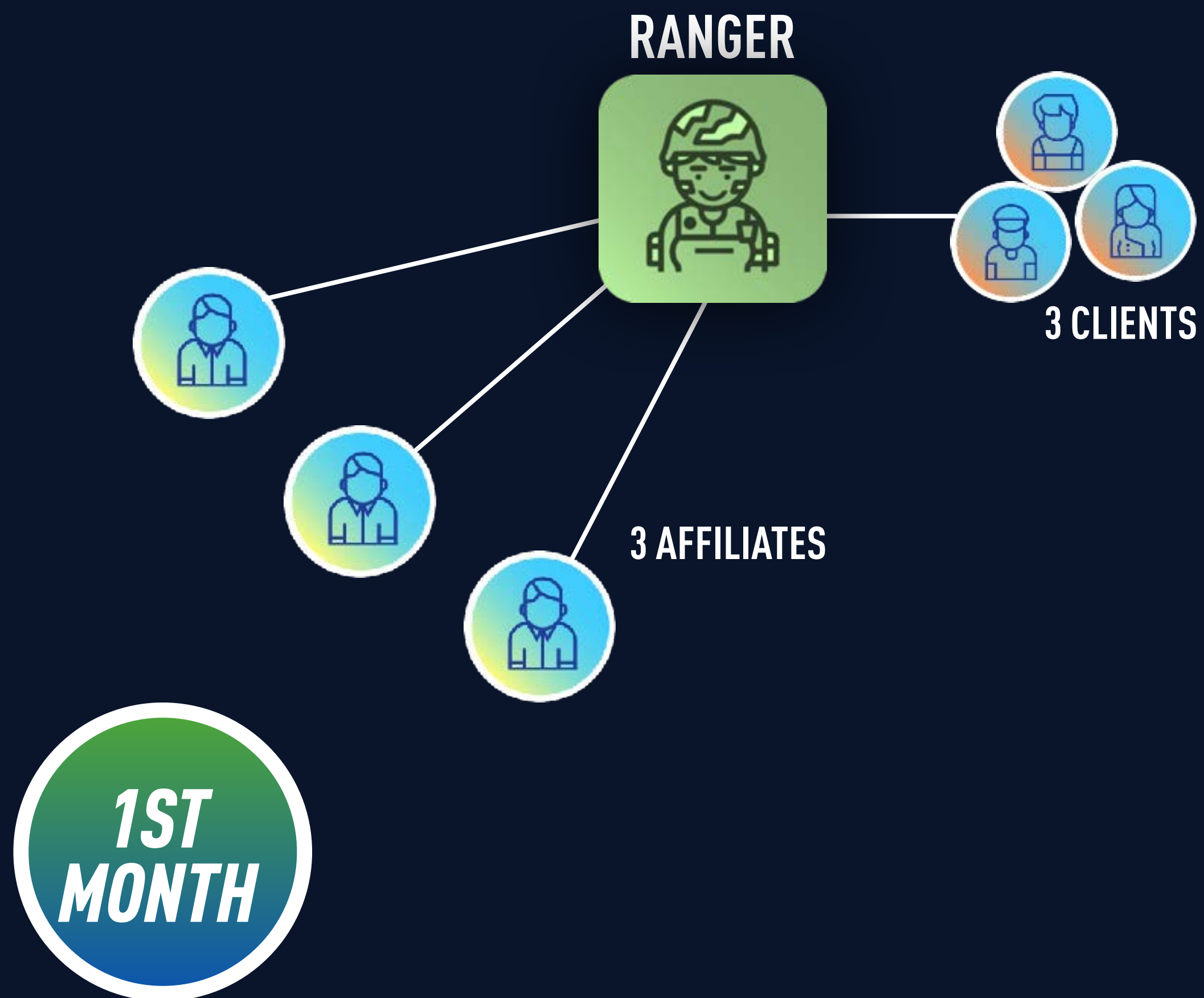
- ▶ FOR EACH PURCHASE OF 60EUR FROM YOU, YOUR FIRST & SECOND 'LINES', YOU WILL RECEIVE ONE (1) SEED POINT.
- ▶ FOR EACH PURCHASE OF 60 EUR FROM YOUR DIRECT CUSTOMERS, YOUR FIRST & SECOND 'LINES' CUSTOMERS YOU WILL ALSO GET ONE (1) SEED POINT.
- ▶ THE SUM OF ALL SEED POINTS COLLECTED OVER THE LAST 365 DAYS QUALIFIES YOUR RANK.
- ▶ YOU WILL KEEP THIS RANK FOR ONE (1) YEAR.



CAREER PATH



*PSV ("PERSONAL SALES VOLUME") IS THE TOTAL VOLUME -INDICATED IN CV- GENERATED BY THE SALES OF PLANET IMPACT'S PRODUCTS TO CUSTOMERS DIRECTLY. THE PSV IS ALSO THE CALCULATION CRITERIA, FOR AFFILIATES, TO REACH THE "ACTIVE STATUS" AND TO EARN INDIRECT COMMISSIONS. THE POTENTIAL EARNING CAP OF THE CAREER-BONUS IS LIMITED IN EACH RANK TO THE AMOUNT OF SEEDS REQUIRED X60/MONTH.



BECOME A PLANET IMPACT RANGER

***BASED ON 720 EUR
YEARLY SUBSCRIPTION***



***720EUR = 1800EUR
TRAVEL VOUCHERS***

DUPLICATE!

**1ST
MONTH**

**2ND
MONTH**

RANGER



3 CLIENTS

3 AFFILIATES

RANGER



3 CLIENTS

3 AFFILIATES

3 AFFILIATES

RANGER



3 CLIENTS

PROTECTOR



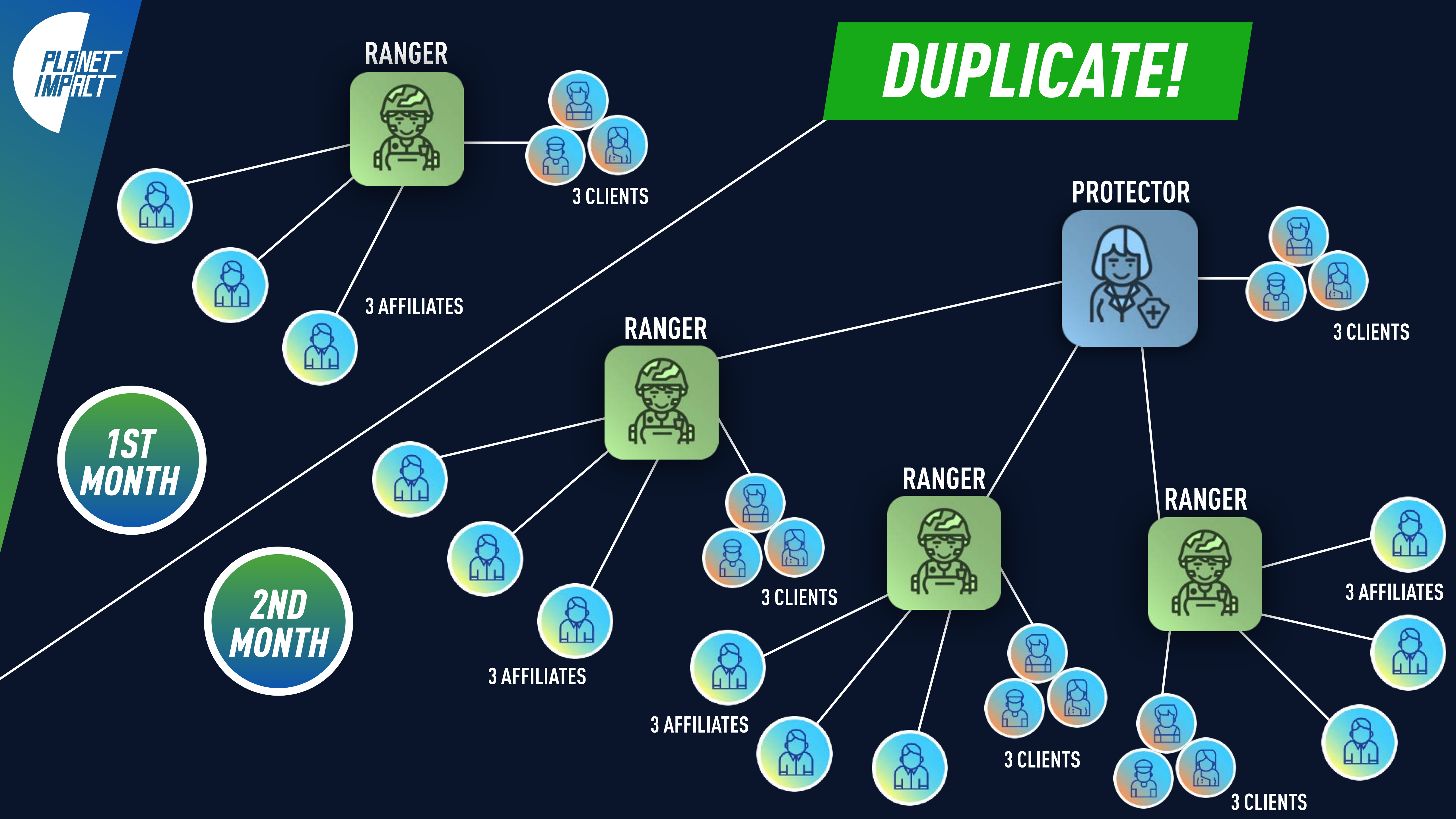
3 CLIENTS

RANGER



3 AFFILIATES

3 CLIENTS

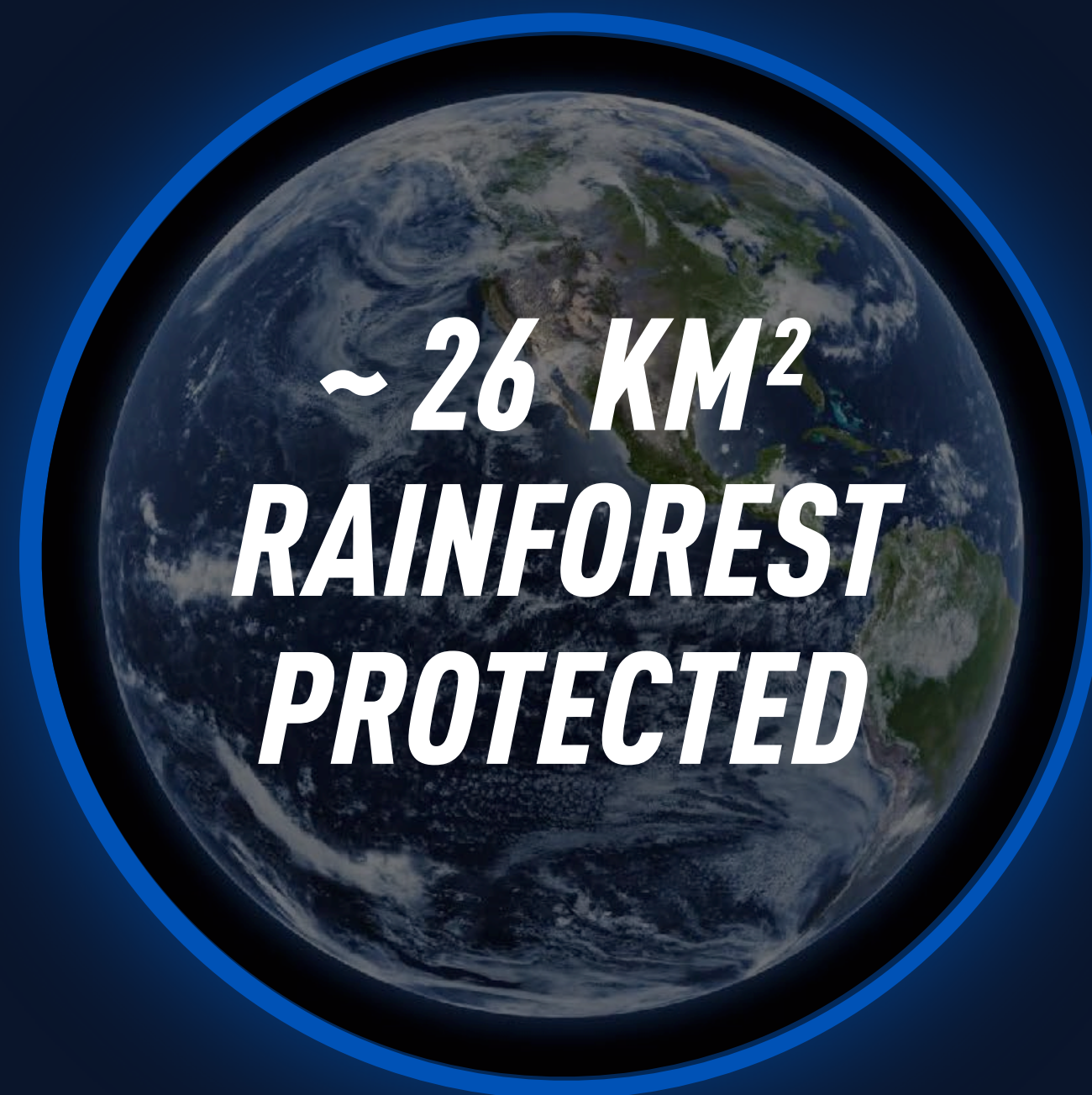


EXAMPLE

PROFIT

IF YOU FOLLOW THE
DUPLICATION MODEL FOR
6 MONTHS YOU CAN SEE
WHAT YOUR OWN PROFIT
WILL BE & WHAT OUR
PLANET CAN PROFIT.

EARTH PROFIT



CALCULATION BASED ON AVERAGE OF
1000 M² PROTECTED/24EUR

YOUR PROFIT



COMING FROM UNILEVEL-BONUS ONLY,
THE OTHER BONUSES ARE NOT EVEN
CALCULATED IN THIS EXAMPLE

ANY KIND OF STATEMENT/DECLARATION AND/OR EXAMPLE OF EARNINGS SHOWN IN THIS COMPENSATION PLAN REPRESENT A MERE ESTIMATE OF WHAT AFFILIATES COULD EARN AND MUST NOT BE INTENDED AS ANY KIND OF 'GUARANTEE' OF REVENUES/EARNINGS.





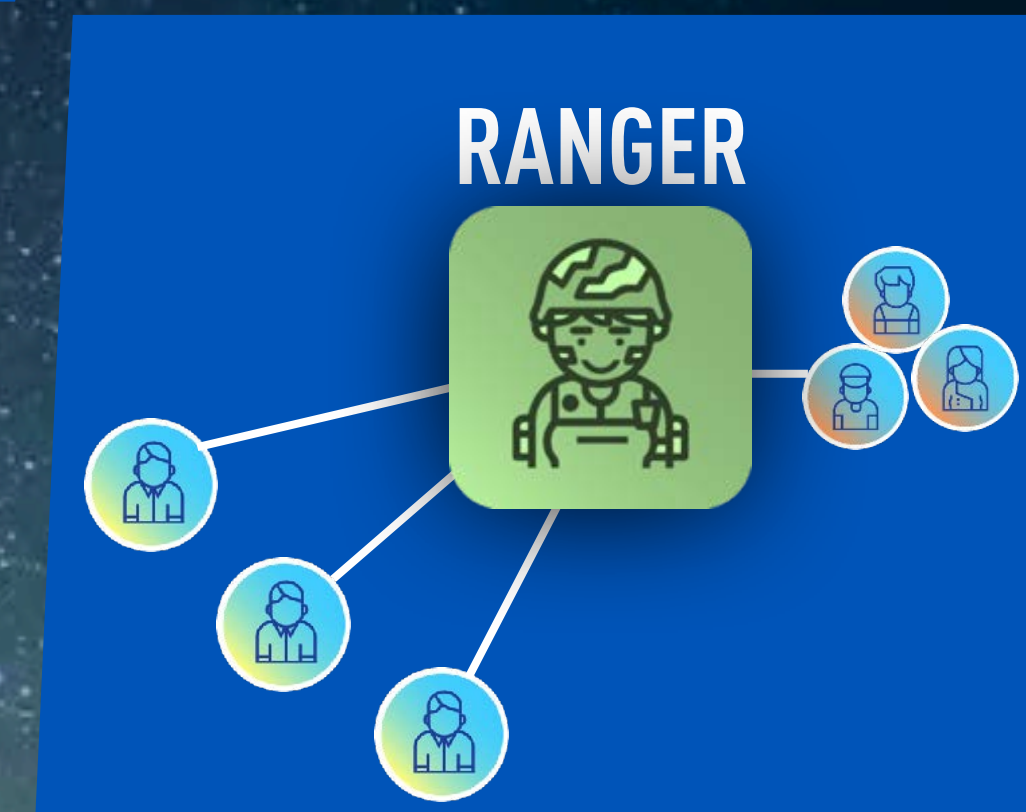
ARE YOU HOPING
THAT OTHERS SOLVE
THE PROBLEM,
OR DO YOU ACT NOW
TOGETHER WITH US?

GET YOUR LICENSE

1

*BE YOUR FIRST CUSTOMER **

2



GENERATE 3 CUSTOMERS
& ENROLL 3 AFFILIATES

3

DUPLICATE

* NOT MANDATORY BUT HIGHLY RECOMMENDED

PROMO

DIRECT-BONUS*

(1/3 FROM WORLDWIDE POOL)

***GENERATED FROM YOUR DIRECT CUSTOMERS
AND YOUR DIRECT AFFILIATES***

**EACH 720EUR YEARLY SUBSCRIPTION
PACK GIVES ONE (1) CREDIT TO THE
SPONSOR-AFFILIATE. PAID ONE TIME**



CREDITS

THE POTENTIAL EARNING CAP
OF 1 CREDIT IS 720EUR

PROMO

***DOUBLED TRAVEL
DISCOUNT VOUCHER****

***ON ALL YEARLY
SUBSCRIPTION
PACKS DOUBLED UP
THE VALUE IN
TRAVEL DISCOUNT
VOUCHER***

720EUR = 1800EUR

**PLANET
IMPACT**

* PROMOTION VALID UNTIL 31.03.2020



***PLANET
IMPACT***

LET'S SAVE OUR PLANET TOGETHER!

***PLANET
IMPACT***

DISCLAIMER

ATTENTION: ANY KIND OF DECLARATION/STATEMENT AND/OR EXAMPLE OF EARNINGS SHOWN IN THIS COMPENSATION PLAN REPRESENTS A MERE ESTIMATE OF WHAT THE AFFILIATES -IN PRINCIPLE-, MAY EARN, AND IT MUST NOT BE INTENDED LIKE A “GUARANTEE” OF REVENUES/EARNINGS.

AS A MATTER OF FACT, THERE IS NO CERTAINTY THAT THE AFFILIATES CAN OBTAIN RESULTS AND TARGETS, IN TERMS OF CAREER AND/OR REVENUES/EARNINGS. SOME EXTERNAL AND UNPREDICTABLE FACTORS, COULD AFFECT THE RESULTS/TARGETS, IRRESPECTIVE OF THE EFFORTS BY SUCH AFFILIATES.

THIS COMPENSATION PLAN IS PROTECTED BY COPYRIGHT AND IP RIGHTS; ANY UNAUTHORIZED USE OF IT MAY BE PROSECUTED BY LAW. PLANET IMPACT INTERNATIONAL LTD. AT ANY TIME MAY CHANGE -EVEN IN PART- THE COMPENSATION PLAN, IF ANY KIND OF CIRCUMSTANCES REQUIRE SUCH CHANGES.

IT IS STRICTLY FORBIDDEN TO AMEND THIS DOCUMENT WITHOUT THE EXPRESS WRITTEN AND IN ADVANCE AUTHORISATION OF PLANET IMPACT INTERNATIONAL LTD.; IT IS RECOMMENDED TO CHECK ALWAYS THE LAST VERSION AVAILABLE OF IT ON THE OFFICIAL WEBSITE OF PLANET IMPACT INTERNATIONAL LTD.

VERSION 12 - 02.10.2019 - ALL RIGHT RESERVED

WWW.PLANETIMPACT.COM

